



TK001

# B&C #E150 /kids

B&C  
COLLECTION

## Composition

100% pre-shrunk, ring-spun cotton (investing in Better Cotton\*)

\* By choosing our cotton products, you're supporting our investment in Better Cotton's mission

## Size

1-2\*, 3-4, 5-6, 7-8, 9-11, 12-13

## Packing

10 pcs/pack &amp; 100 pcs/carton

## Weight

145 g/m<sup>2</sup>

## Color Note

\* Ash: 99% pre-shrunk ring-spun cotton 1% viscose; Sport Grey: 85% pre-shrunk ring-spun cotton 15% viscose; Colours available in 1-2: White - Black - Navy - Royal Blue

## Details

All our kid's t-shirts are designed for comfort and durability. The B&amp;C #E150 /kids is a tubular modern short-sleeve tee, with a gender-neutral look for boys &amp; girls from kid to teen, perfect for everyday wear. Made from our legendary sustainable #E150 single jersey, it is soft, comfortable, neck label free and offers a #premium printing surface. Its wide size range, from baby to teen, completes the B&amp;C #E150 range, ideal for adults and kids from 1 to 99! Pair it with adult B&amp;C #E150 styles for coordinated looks.

## #Features

Engineered for boys&amp;girls (gender-neutral), from kid to teen #inclusive

Tubular construction (size 80-92 cm/1-2 yrs. with side seam) #movement

Thin collar rib for modern appearance #uptodate

Back necktape for a clean finish #comfort

Available in 20 colours and 6 sizes (1/2 to 12/13)

Matching adult style, from 15 yrs+ : B&amp;C #E150

## #Quality/Handfeel

100% cotton #protectmyskin #Oeko-Tex100

Resistant fabric and soft handfeel #ringspun

Proven B&amp;C quality fabric #20years

"B&amp;C No Label" solution for easy rebranding #customise

## #Sustainability

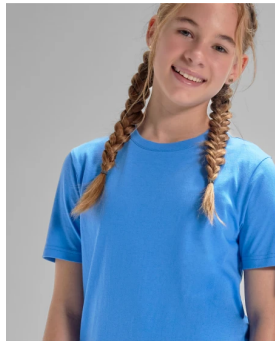
B&amp;C, now sourcing 100% more sustainable fibres

Supporting responsible cotton production through Better Cotton\*

Recyclable at end of life

\* This product is sourced via a system of mass balance and therefore may not contain Better Cotton.

## Sustainability



## Colors



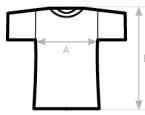
## Care instructions



All our products are tested and approved using all main print techniques.

View on the website





<b>B&amp;C #E150 /KIDS TK001</b>	<b>1/2</b>	<b>3/4</b>	<b>5/6</b>	<b>7/8</b>	<b>9/11</b>	<b>12/13</b>
	80-92	98-104	110-116	122-128	134-144	152-164
A HALF CHEST	27	30	33	36	39,5	43
B BODY LENGTH FROM NECK POINT	42	45	48	51	54,5	58

View on the website

