



# 3800

## Ultra Cotton Adult Pique Sport Shirt

**DETAILS**

**Weight**  
**Content**  
**Yarn Count**  
**Features**

214.0 G/SqM (White 205.0 G/SqM)  
 100% Ring Spun Cotton  
 22/1  
 Contoured welt collar and cuffs  
 Clean finished placket with reinforced bottom box  
 3 woodtone buttons  
 Twin-needle bottom hem  
 Classic fit  
 Classic heavyweight fabric  
 Tear away label

**Country of Origin**

Honduras

**Sizes**

S-2XL

**Case Packs**

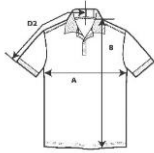
S - 2XL 36 PIECES

**Colours**

11

**SKU's**

55



**SPECIFICATIONS**

**Centimeters**

	ToI-	ToI+	S	M	L	XL	2XL
<b>Chest (A)</b>	2.540	2.540	48.260	53.340	58.420	63.500	68.580
<b>Length from HPS (B)</b>	2.540	2.540	72.390	76.200	78.740	81.280	83.820
<b>Sleeve length (Centre back) (D2)</b>	1.905	1.905	43.815	47.625	51.435	55.245	59.055

**Inches**

	ToI-	ToI+	S	M	L	XL	2XL
<b>Chest (A)</b>	0.750	0.750	19.000	21.000	23.000	25.000	27.000
<b>Length from HPS (B)</b>	1.000	1.000	28.500	30.000	31.000	32.000	33.000
<b>Sleeve length (Centre back) (D2)</b>	0.750	0.750	17.250	18.750	20.250	21.750	23.250

**COLOURS**

Code	Sizes	Comments
036	S-2XL	
109	S-2XL	
042	S-2XL	
108	S-2XL	50% Cotton, 50% Polyester
033	S-2XL	
083	S-2XL	
032	S-2XL	
040	S-2XL	
295	S-2XL	90% Cotton, 10% Polyester
051	S-2XL	
030	S-2XL	

**CHANGES**

Deletions  
 S, M, L, XL, 2XL  
 Total Net Change 15 SKU's  
 Light Blue, Purple, Sand