

KARIBAN

REFERENCE : K122

SIZES : M/L_L/XL

COMPOSITION :

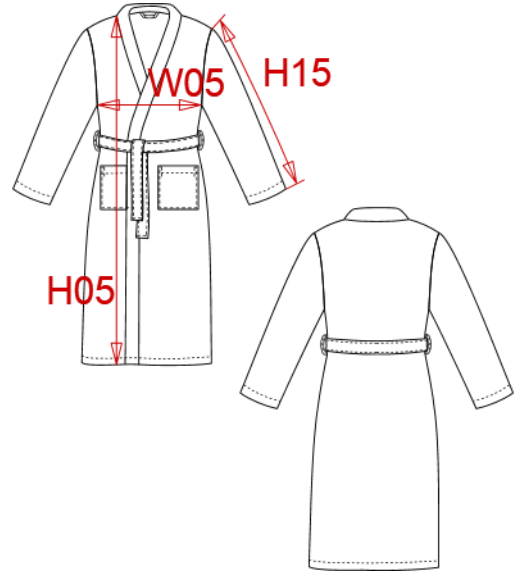
Main fabric : Cotton waffle 220 100%cotton

WEIGHT :

Main fabric : 220 gsm

ARTICLE WEIGHT :

600 gr/pc



| DESCRIPTION |
|--|
| Français : Peignoir kimono nid d'abeille |
| English : Waffle robe |
| Nederlands : Kamerjas 'kimono' honingraat |
| Deutsch : Wafel bademantel |
| Español : Albornoz kimono punto nido de abeja |
| Italiano : Accappatoio kimono |
| Português : Robe favo de mel |

| COLORS | PANTONE SERIGRAPHIE |
|--------|------------------------|
| White | White |
| Black | Black |

| MEASUREMENT | |
|---|----------|
| Description | M/L L/XL |
| H05 Hauteur totale / Total height | 117 124 |
| W05 1/2 largeur poitrine / 1/2 chest width | 60 64 |
| H15 Longueur manche / Sleeve length | 55 58 |

| CARE LABEL |
|------------|
| |

| PACKING |
|---|
| Box 30 pcs / box All sizes => L:40cm W:60cm H:40cm GW:14.42kg NW:15.90kg |