

# KARIBAN

**REFERENCE :** K479

**SIZES :** XS\_S\_M\_L\_XL\_XXL\_3XL\_4XL

**COMPOSITION :**

Main fabric : Brushed cotton / polyester fleece 80/20 - 280 80% cotton / 20%polyester

Fabric 1 : Cotton single jersey (32/1) - 180 For tone on tone hood lining 100%cotton

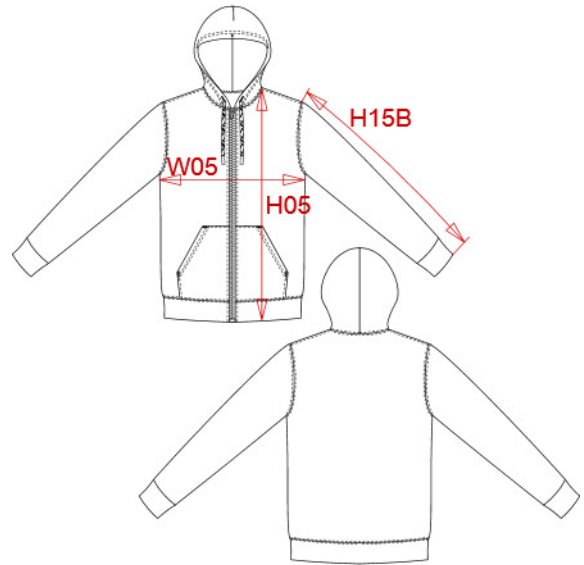
**WEIGHT :**

Main fabric : 280 gsm

Fabric 1 : 180 gsm

**ARTICLE WEIGHT :**

516 gr/pc



DESCRIPTION	
<b>Français :</b> Sweat-shirt zippé capuche	
<b>English :</b> Full zip hoodie	
<b>Nederlands :</b> Sweater met rits en capuchon	
<b>Deutsch :</b> Kapuzensweatshirt mit Zip	
<b>Español :</b> Sudadera con capucha y cremallera	
<b>Italiano :</b> Felpa con cappuccio e zip	
<b>Português :</b> Sweatshirt com capuz e fecho	

COLORS	PANTONE SERIGRAPHIE
White	White
Black	Black
Navy	433C
Dark grey	447C
Oxford grey	Based on Cool gray 7C
Red	200C
Light royal blue	653C
Yellow	1235C
Orange	1585C
Forest green	5605C
Wine	504C

MEASUREMENT									
Description	XS	S	M	L	XL	XXL	3XL	4XL	
<b>H05</b> Hauteur totale avec BC / Total height with rib	69	71	73	75	77	79	81	83	
<b>W05</b> 1/2 largeur poitrine à 1.5cm de l'emmanchure / 1/2 chest width at 1.5 cm below armhole	49	52	55	58	61	64	67	70	
<b>H15B</b> Longueur manche avec poignet / Sleeve length with cuff	59	60,50	62	63,50	65	66,50	68	69,50	

CARE LABEL				

PACKING	
Box	20 pcs / box XS-S => L:60cm W:40cm H:cm GW:kg NW:kg M-XXL => L:60cm W:40cm H:cm GW:kg NW:kg 3XL-4XL => L:60cm W:40cm H:cm GW:kg NW:kg