

# KARIBAN

**REFERENCE :** K510

**SIZES :** XS\_S\_M\_L\_XL\_XXL

**COMPOSITION :**

Main fabric : Cotton poplin - 125 100%cotton

**WEIGHT :**

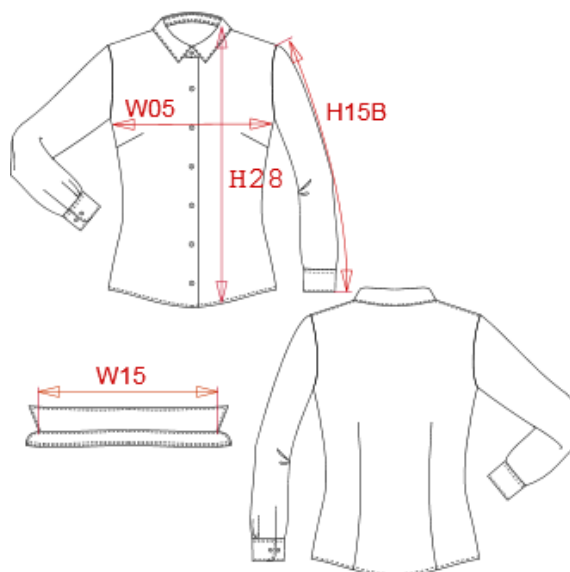
Main fabric : 125 gsm

**TECHNICAL DETAIL :**

Easy care finish

**ARTICLE WEIGHT :**

165 gr/pc



DESCRIPTION
<b>Français :</b> Chemise popeline manches longues femme
<b>English :</b> Ladies' long sleeve poplin shirt
<b>Nederlands :</b> Damesblouse in popeline met lange mouwen
<b>Deutsch :</b> Langärmelige Popeline-Bluse
<b>Español :</b> Camisa de popelina con manga larga para mujer
<b>Italiano :</b> Camicia donna popeline maniche lunghe
<b>Português :</b> Camisa de senhora em popeline de manga comprida

COLORS	PANTONE SERIGRAFIE
White	White
Bright sky	2708C
Black	Black
Navy	433C
Striped pale blue / White	277C / White

MEASUREMENT						
Description	XS	S	M	L	XL	XXL
<b>W05 (M)</b> 1/2 largeur poitrine à 1.5cm de l'emmanchure / 1/2 chest width at 1.5cm below armhole	44,50	47,50	50,50	53,50	56,50	59,50
<b>H09 (L)</b> Hauteur totale devant / Front total height	63	65	67	69	71	73
<b>H15B (L)</b> Longueur manche avec poignet / Sleeve length with cuff	60	61	62	63	64	65
<b>W15 (M)</b> Tour de haut de col / Top collar measurement	38	39,25	40,50	41,75	43	44,25

CARE LABEL

PACKING	
Box	12 pcs / box XS => L:60cm W:40cm H:20cm GW:4.30kg NW:3.00kg S => L:60cm W:40cm H:20cm GW:4.95kg NW:3.10kg M => L:60cm W:40cm H:20cm GW:5.00kg NW:3.15kg L => L:60cm W:40cm H:20cm GW:5.20kg NW:3.35kg XL => L:60cm W:40cm H:20cm GW:5.35kg NW:3.50kg XXL => L:60cm W:40cm H:20cm GW:5.50kg NW:3.65kg