

# KARIBAN

**REFERENCE :** K591

**SIZES :** XS\_S\_M\_L\_XL\_XXL

**COMPOSITION :**

Main fabric : Cotton poplin - 120 100%cotton

**WEIGHT :**

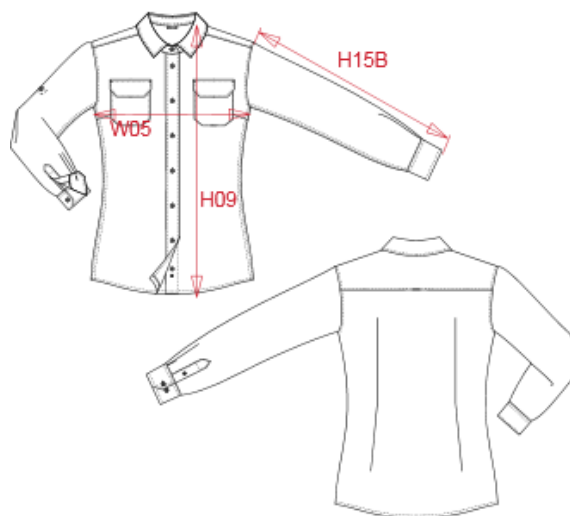
Main fabric : 120 gsm

**TECHNICAL DETAIL :**

Soft ironing

**ARTICLE WEIGHT :**

210 gr/pc



DESCRIPTION
<b>Français :</b> Chemise safari manches longues femme
<b>English :</b> Ladies' long sleeve safari shirt
<b>Nederlands :</b> Damesoverhemd safari lange mouwen
<b>Deutsch :</b> Langarm-Safarihemd für Damen
<b>Español :</b> Camisa Safari mujer manga larga
<b>Italiano :</b> Camicia donna safari maniche lunghe
<b>Português :</b> Camisa Safari de senhora de manga comprida

COLORS	PANTONE SERIGRAPHIE
Beige	7536C
Navy	433C
White	White
Light khaki	7764C

MEASUREMENT						
Description	XS	S	M	L	XL	XXL
<b>W05 (L)</b> 1/2 largeur poitrine à 1.5cm de l'emmanchure / 1/2 chest width at 1.5cm below armhole	44,50	47,50	50,50	53,50	56,50	59,50
<b>H09 (L)</b> Hauteur totale devant / Front total height	68	70	72	74	76	78
<b>H15B (L)</b> Longueur manche avec poignet / Sleeve length with cuff	60	61	62	63	64	65

CARE LABEL

PACKING	
Box	25 pcs / box XS => L:60cm W:40cm H:16cm GW:6.10kg NW:4.85kg S => L:60cm W:40cm H:16cm GW:6.40kg NW:5.15kg M => L:60cm W:40cm H:16cm GW:6.60kg NW:5.35kg L => L:60cm W:40cm H:16cm GW:7.10kg NW:5.85kg XL => L:60cm W:40cm H:16cm GW:7.35kg NW:6.10kg XXL => L:60cm W:40cm H:16cm GW:7.55kg NW:6.30kg