



### About

- Made in Portugal.
- Made from more eco-friendly and more ethical organic cotton.
- No label: 100% customisable for your project.

100 % organic cotton. Made in Portugal. Ringspun combed cotton. Straight fit. Enzyme washed. French Terry inner. 1/2 circle in the back. Recycled nylon rib finish on zip. Two front pockets. 3-panel hood lined with main material. Tone-on-tone flat drawstring with recycled metal tips and eyelets. Cover stitch on the neckline, armholes, cuffs and bottom hem. 1 x 1 rib cuffs, neckline and bottom hem. Inner taped neck with herringbone. Garment dyed after assembly: colours may vary slightly from item to item. The colour may rub off on contact with light surfaces.

 280 g/m<sup>2</sup> 

### Sizes

 XXS XS S M L XL XXL 3XL 4XL

### More information

#### Logistic

 5

 20





PT - Portugal

#### Customs code

 61102099

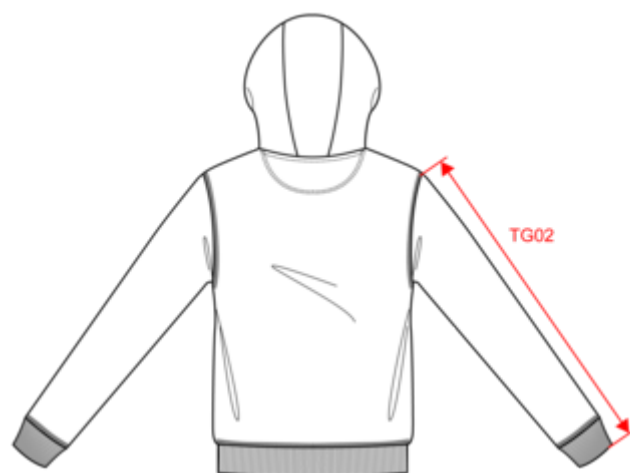
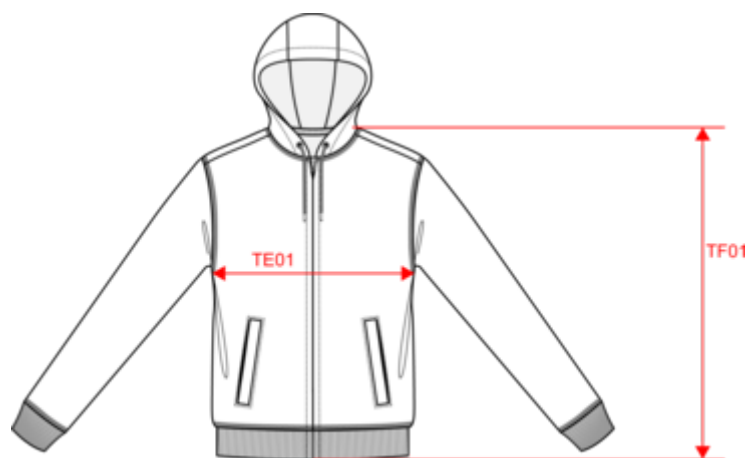
### Colours

 Washed black  
 Washed Ivory  
 Washed Jade Green  
 Washed Navy Blue  
 Washed Organic Khaki  
 Washed Pomelo

### Certifications



Dimensions (cm)



Measurements in cm	XXS	XS	S	M	L	XL	XXL	3XL	4XL
TE01 - 1/2 chest width at 1.5cm below armhole	46.00	49.00	52.00	55.00	58.00	61.00	64.00	67.00	70.00
TF01 - Total height from HSP	65.00	67.00	69.00	71.00	73.00	75.00	77.00	79.00	81.00
TG02 - Long sleeve length	61.50	62.50	63.50	64.50	65.50	66.50	67.50	68.50	69.50

# NS417

Eco-friendly unisex French Terry full zip hooded sweatshirt

Colours information



**Washed black**  
RVB : 43,39,42  
Pantone C : Neutral Black  
Pantone TCX : 19-4008TCX



**Washed Ivory**  
RVB : 243,232,220  
Pantone C : 7534C  
Pantone TCX : 11-4202TCX



**Washed Jade Green**  
RVB : 151,173,165  
Pantone C : 5635C  
Pantone TCX : 16-5304TCX



**Washed Navy Blue**  
RVB : 54,61,75  
Pantone C : 432C  
Pantone TCX : 19-4023TCX



**Washed Organic Khaki**  
RVB : 85,89,77  
Pantone C : 418C  
Pantone TCX : 19-0312TCX



**Washed Pomelo**  
RVB : 174,98,83  
Pantone C : 7522C  
Pantone TCX : 17-1532TCX

Logistic



5



20

Sizes	Width (cm)	Height (cm)	Length (cm)	Net weight (kg)	Gross weight (kg)	Pieces/Box	Pieces/Bundle
XXS	40.00	38.00	60.00	9.14000	10.54000	20	5
XS	40.00	38.00	60.00	9.82000	11.22000	20	5
S	40.00	38.00	60.00	10.36000	11.76000	20	5
M	40.00	38.00	60.00	10.62000	12.02000	20	5
L	40.00	38.00	60.00	11.36000	12.76000	20	5
XL	40.00	44.00	60.00	12.08000	13.48000	20	5
XXL	40.00	44.00	60.00	12.48000	13.88000	20	5
3XL	40.00	44.00	60.00	13.40000	14.80000	20	5
4XL	40.00	44.00	60.00	14.46000	15.86000	20	5