



### About

- Made from responsible materials.
- Made from recycled materials.
- Dropped shoulders for a casual style.

65% organic cotton / 35% post-consumer recycled polyester. Ringspun combed cotton. Regular fit with dropped shoulders . 3-ply brushed fleece. 1/2 circle in the back. Enzyme-washed. Hood lined with main material. Flat drawstrings with recycled metal tips. Two minimalist pockets. 1x1 rib bottom hem and cuffs.

 300 g/m<sup>2</sup> 

### Sizes



### More information

#### Logistic



1



15



#### Country of origin

BD - Bangladesh

#### Customs code



61044200

### Colours



Aquamarine



Black



Hibiscus  
Red



Ivory



Mineral  
Grey

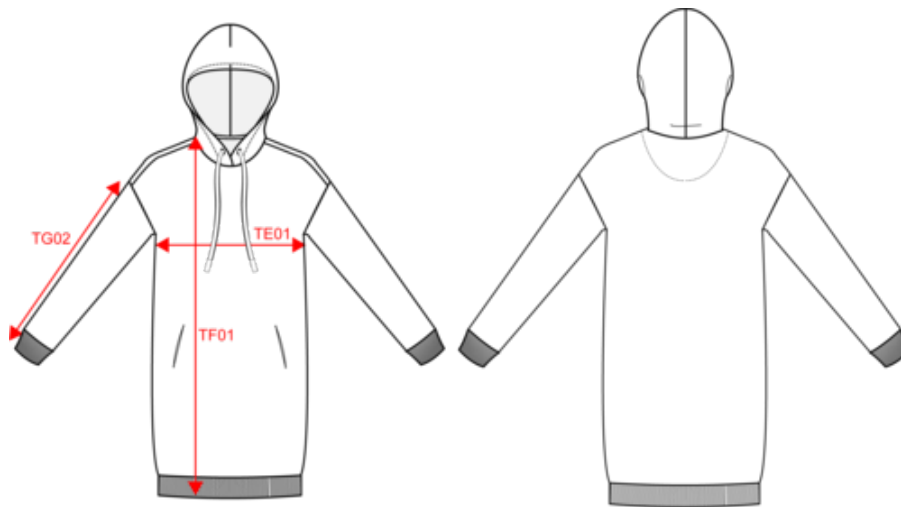
### Certifications



## NS5005

Eco-friendly ladies' hooded sweatshirt dress

### Dimensions (cm)



Measurements in cm	XS	S	M	L	XL
TE01 - 1/2 chest width at 1.5cm below armhole	55.00	58.00	61.00	64.00	67.00
TF01 - Total height from HSP	86.00	88.00	90.00	92.00	94.00
TG02 - Long sleeve length	49.00	50.00	51.00	52.00	53.00

# NS5005

Eco-friendly ladies' hooded sweatshirt dress

Colours information



**Aquamarine**  
RVB : 153,173,190  
Pantone C : 7542C  
Pantone TCX : 15-4008TCX



**Black**  
RVB : 35,35,37  
Pantone C : Black  
Pantone TCX : 19-4004TCX



**Hibiscus Red**  
RVB : 134,27,47  
Pantone C : 1815C  
Pantone TCX : 19-1656TCX



**Ivory**  
RVB : 236,231,218  
Pantone C : 7534C  
Pantone TCX : 11-0701TCX



**Mineral Grey**  
RVB : 94,104,116  
Pantone C : 431C  
Pantone TCX : 18-4215TCX

Logistic



1



15

Sizes	Width (cm)	Height (cm)	Length (cm)	Net weight (kg)	Gross weight (kg)	Pieces/Box	Pieces/Bundle
XS	40.00	40.00	60.00	14.10000	12.40000	15	1
S	40.00	40.00	60.00	14.80000	13.00000	15	1
M	40.00	40.00	60.00	15.40000	13.60000	15	1
L	40.00	40.00	60.00	16.40000	14.60000	15	1
XL	40.00	40.00	60.00	16.80000	15.10000	15	1