

## NS606

### Eco-friendly men's hemp jacket



#### About

- Hard-wearing and comfortable material.
- No label: 100% customisable for your project.
- Quality finishes.

90 % organic cotton / 10 % hemp. Cotton twill. Regular fit. Recycled metal buttons. Natural (undyed) fabric with an authentic appearance. Enzyme-washed product. Two chest pockets with flap and button. Button placket on the rear hem. Two piped pockets at the front sides. Front and back panels. Sleeves with slit and buttoned cuffs. Raw Natural is distinguished by its raw, visually textured appearance, dotted with fine particles visible to the naked eye.

 370 g/m<sup>2</sup> 

#### Sizes



#### More information

##### Logistic



1



10



BD - Bangladesh

##### Customs code



62013010

#### Colours



Raw  
Natural

#### Certifications

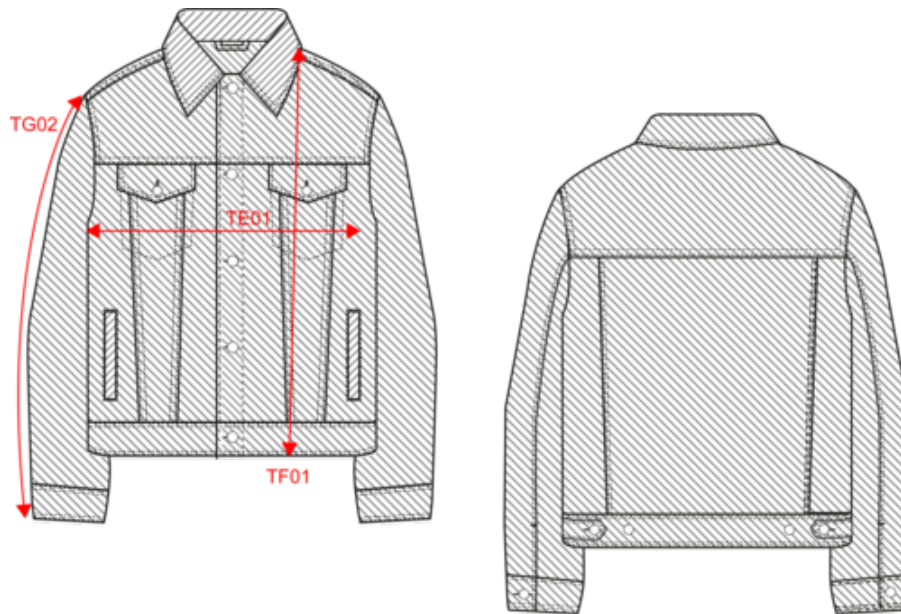


Contains 90% OCS certified Organic Cotton.  
Certified by Ecocert (member of the OCS standard available at  
<https://www.ecocert.com/en>)  
EGL N°103603 / TOPTEX Belgium

## NS606

Eco-friendly men's hemp jacket


Dimensions (cm)



Measurements in cm	S	M	L	XL	XXL	3XL
TE01 - 1/2 chest width at 1.5cm below armhole	53.00	56.00	59.00	62.00	65.00	68.00
TF01 - Total height from HSP	64.00	66.00	68.00	70.00	72.00	74.00
TG02 - Long sleeve length	64.50	65.50	66.50	67.50	68.50	69.50

NS606  
Eco-friendly men's hemp jacket

Colours information



Raw Natural

RVB : 215,201,179

Pantone C : Based on 7500C

Pantone TCX : Based on 13-10006TCX

Logistic



1



10

Sizes	Width (cm)	Height (cm)	Length (cm)	Net weight (kg)	Gross weight (kg)	Pieces/Box	Pieces/Bundle
S	40.00000	17.00000	60.00000	7.10000	7.70000	10	1
M	40.00000	17.00000	60.00000	7.48000	8.08000	10	1
L	40.00000	17.00000	60.00000	7.78000	8.38000	10	1
XL	40.00000	19.00000	60.00000	7.98000	8.58000	10	1
XXL	40.00000	19.00000	60.00000	8.20000	8.80000	10	1
3XL	40.00000	19.00000	60.00000	8.40000	9.00000	10	1