



The wool-like men's body warmer

Fitted

S 3XL

140 GSM

Details

- Sleeveless
- High collar
- Reverse nylon zip at center front
- Zipped welt pockets with extra grosgrain puller
- Elastic tape binding at armhole
- Fully quilted
- Side panels for better shape
- Inside seams with binding finish
- Bottom hem with adjustable plastic stopper and elastic cord

Composition

Shell - Plain Weave Brushed
 100% Polyester - Recycled - 140 GSM
 Fluorine-free DWR
 Padding
 100% Polyester - Recycled -

Lining - Plain Weave
 100% Polyester - Recycled
 Fluorine-free DWR



Care

Wash similar colours together, no ironing, wash inside out. Close all zips before washing.



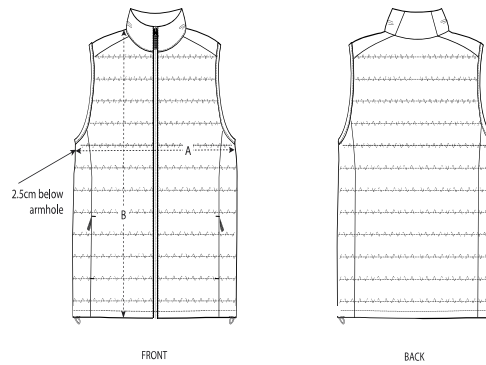
Country of origin

Weaving : China
 Dyeing : China
 Assembly : China

Essential Heathers



Size Guide



Sizes		S	M	L	XL	XXL	3XL
A	Half Chest	53.5	56	59.5	63	66.5	70
B	Body Length	65	68.5	70.5	72.5	74.5	76.5

Packing

Sizes	S	M	L	XL	XXL	3XL
Pieces/bag	5	5	5	5	5	5
Pieces/box	10	10	10	10	10	10