



MEN T-SHIRTS
STANLEY SHIFTS DRY



STTM558

The men's dry handfeeling long sleeve t-shirt

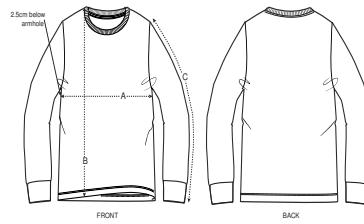
Single Jersey
 100% Organic ring-spun combed cotton
 200 GSM

- Set-in sleeve
- 1x1 rib at neck collar and sleeve hem
- Inside back neck tape in self fabric
- Bottom hem with wide double topstitch

MEDIUM FIT

S	M	L	XL	XXL
---	---	---	----	-----

Size guide



SIZES		S	M	L	XL	XXL
A	Half Chest	48.5	51.5	54.5	57.5	60.5
B	Body Length	70	73	75	77	79
C	Sleeve Length	65.5	66.5	67.5	68.5	69.5

Printing Specifications

Fits all kinds of print techniques. Please download our printing guide for details.

WHITES



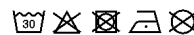
COLORS



ESSENTIAL HEATHERS



Wash similar colours together, do not iron on print, wash and iron inside out.



STANLEY/STELLA